



# HORIZON EUROPE

## THE EU RESEARCH & INNOVATION PROGRAMME

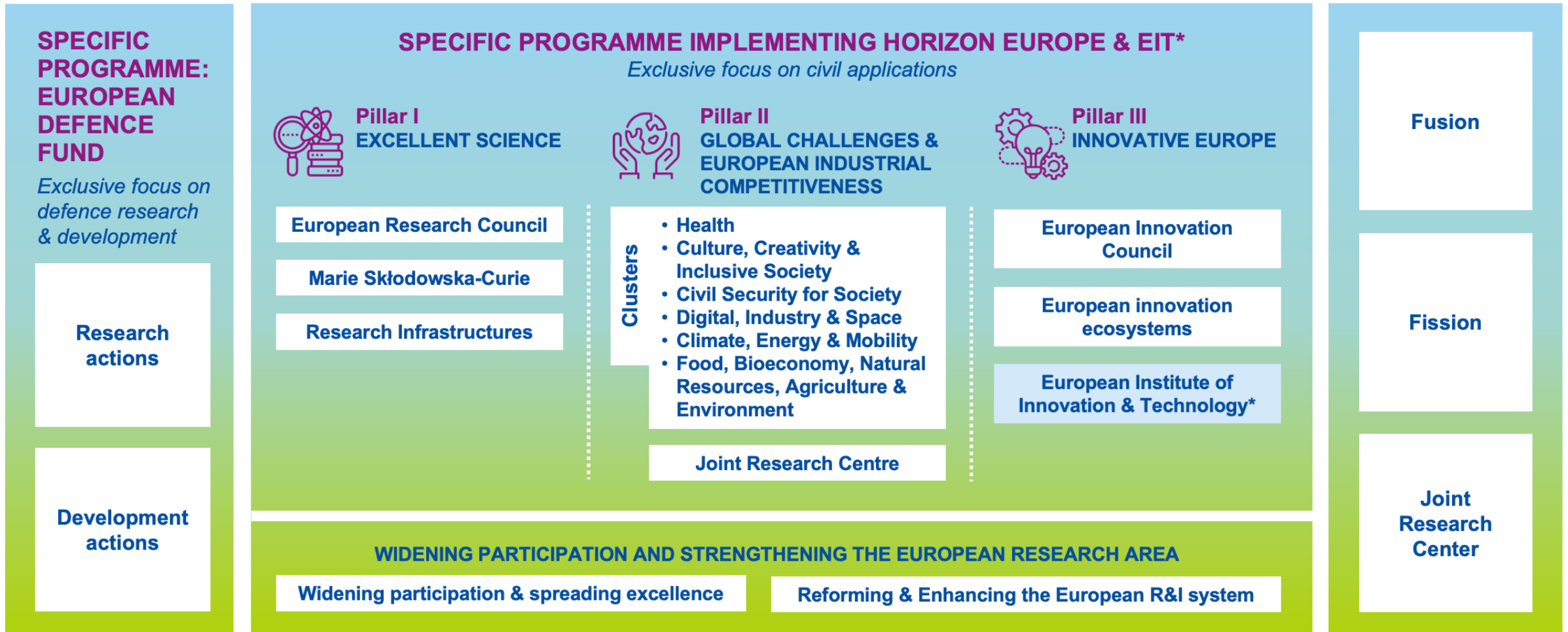
2021 – 2027

**Widening Participation  
and Spreading Excellence**

Magda De Carli  
Head of Unit – ERA & Country intelligence  
European Commission  
DG Research and Innovation

# HORIZON EUROPE

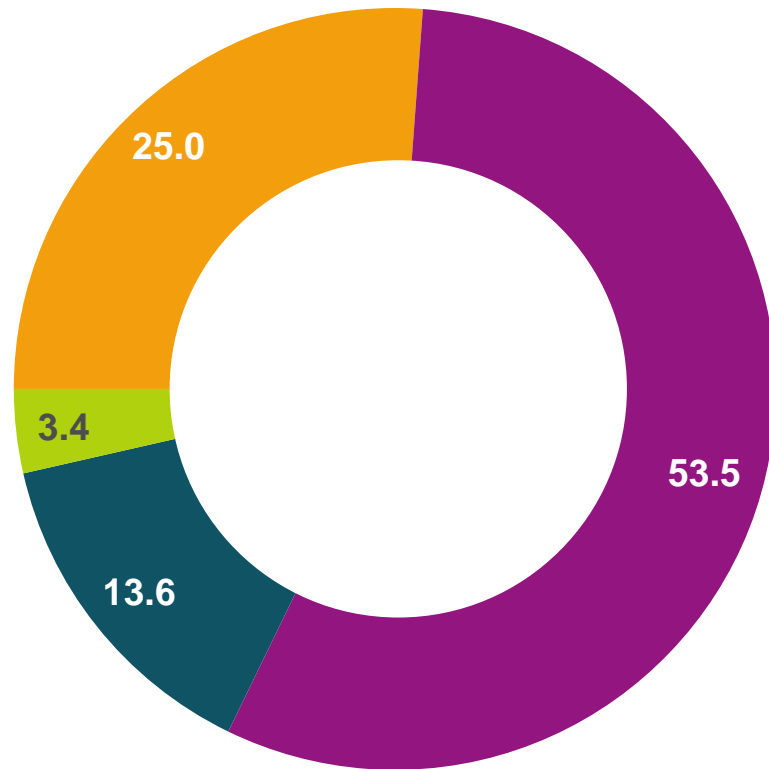
# EURATOM



\* The European Institute of Innovation & Technology (EIT) is not part of the Specific Programme

# Horizon Europe Budget: €95.5 billion (2021-2027)

(including €5.4 billion from NGEU – Next Generation Europe – programme of EU for Recovery from COVID-19 crisis)



## Political agreement December 2020

€ billion in current prices

- Excellent Science
- Global challenges and European ind. comp.
- Innovative Europe
- Widening Part and ERA

# Lessons Learned from Horizon 2020 Interim Evaluation

# Key Novelties in Horizon Europe



Support breakthrough innovation



European Innovation Council



Create more impact through mission-orientation and citizens' involvement



EU Missions

Rationalise partnerships' landscape



New approach to partnerships



Reinforce openness



Open science policy



Strengthen international cooperation



Extended association possibilities



Encourage participation



Widening and Spreading Excellence

Part

# Widening Participation & Strengthening the European Research Area (ERA):

## Widening Participation and Spreading Excellence

- Teaming, Twinning, ERA Chairs,
- European Cooperation in Science and Technology (COST)
- Boosting National Contact Points' (NCPs) activities, pre-proposal checks and advice
- Brain circulation
- Excellence initiatives (hubs + universities)
- Possibility for entities from widening countries to join already selected collaborative R&I actions
- Recognition of participation
- Matchmaking services

€ 2,96 billion

## Reforming and enhancing the EU R&I system

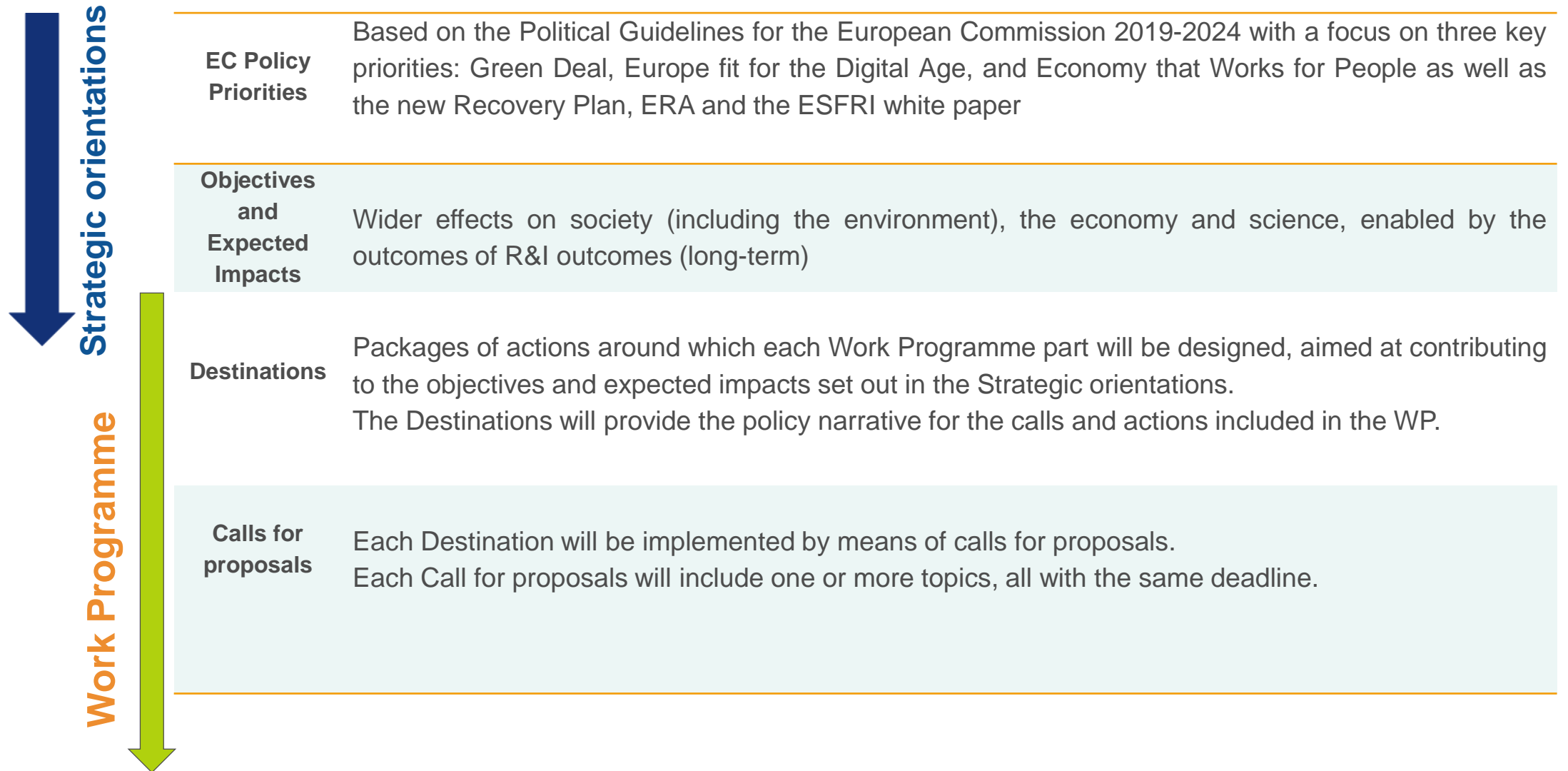
- Strengthening the evidence base for R&I policy
- Foresight
- Support for policy makers to the ERA development
- **Support to national R&I policy reform, including Policy Support Facility**
- Attractive researcher careers and links with higher education
- Open science, citizen science and science communication
- Gender equality
- Ethics and integrity
- Support to international cooperation
- Scientific input to other policies
- Support to the Programme implementation
- Support for National Contact Points
- Support to dissemination & exploitation

€ 0,44 billion

# Novelties for Widening under Horizon Europe:

- Full alignment with **new ERA strategic priorities**
- **Continuation of core widening instruments** Teaming, Twinning and ERA Chairs with some improvements in response to lessons learnt
- **Research cost for CSA eligible** under Teaming, Twinning and ERA Chairs
- More emphasis on **developing research management capacities**
- **Full integration of COST** under widening, 80% of actions must have significant widening dimension
- **Fixed list of eligible Member States** to host the main beneficiary (EU13 + PT + EL) + Associated Countries
- **EU Outermost Regions** fully eligible to host the co-ordinator
- Full implementation of “**Advancing Europe**” package with a number of additional support schemes to boost participation of less research performing countries
- More integrated policy approach and **enhanced synergies** with regional policy, transnational missions, regional smart specialisation strategies etc.

# Horizon Europe - Towards the first HE WP: definitions and approach



# Destination #1: Improved access to excellence

**Objective:** to create a portfolio of complementary actions that will build R&I capacities in Widening countries enabling them to advance to the competitive edge at European and international level.

## **Main impact:**

- Increased science and innovation capacities for all actors in modernised and more competitive R&I systems in widening countries
- Reformed institutions and increased attractiveness for talents
- Higher participation success in Horizon Europe and more consortium leadership roles
- Stronger linkages between academia and business and improved career permeability
- Strengthened role of the Higher Education sector in research and innovation
- Better involvement of regional actors in R&I process
- Improved outreach to international scale for all actors



# Destination #2: Attracting and mobilising the best talents

## Main impacts:

- Inciting institutional reforms in research institutions in widening countries
- Better use existing research infrastructures and populate them with excellent talents
- Attract first-class talents and turn them into game changers in institutions
- Revert brain drain
- Improved linkages between academic and business, notably by overcoming sectoral barriers
- Free circulation of knowledge and expertise in line with ERA priorities

# Widening participation and strengthening the ERA WP

- **Destination #1:** Improved access to excellence
  - Teaming
  - Twinning (incl. special call for Western Balkan Countries)
  - Excellence Hubs
  - European Excellence Initiative for Higher Education Institutions
  - R&I Policy making in Western Balkans
  - Hop-on facility
  - (under other actions) COST
  
- **Destination #2:** Attracting and mobilising the best talents
  - ERA Chairs
  - Fostering balanced brain circulation: ERA Fellowships
  - Fostering balanced brain circulation: ERA Talents
  
- **Destination #3:** Reforming and enhancing the EU research and innovation system 2021-2024

## Comparison of key characteristics of widening actions

Actions in WP	Consortium structure	Target group and scale of operation	Policy objectives
Teaming	Main beneficiary + 1 or 2 strategic advanced partners	Single centre of excellence to be modernised or created, relevant at national scale	Develop light houses and role models to stimulate reforms of national R&I system, increase level of excellence of national R&I system, mobilise new investments
Twinning	Main beneficiary and focused network of partnering organisations	Individual institutions and small network of advanced partnering institutions. Institutional scale with European outreach	Develop excellence in a chosen R&I domain for the main beneficiary with the help of twinning partners, increase visibility of main beneficiary and upskill its staff
ERA Chairs	Mono-beneficiary host organisation with optional single partner organisation	Excellent individuals and their teams, institutional scale	Excellent scientists and their teams to become game changers at institutional level, develop new research strands and raise level of excellence
Excellence hubs	Group of 2 or 3 placed based innovation ecosystems based on the quadruple helix approach	Research institutions, firms, local/regional government, societal actors, local regional scale with cross border dimension	Foster innovation excellence in place based (local/regional) innovation ecosystems, improve science business linkages, regional dimension of widening, <b>bottom-up approach</b>
Excellence Initiative for Higher Education Institutions	Network of European Universities, co-ordinated by university from widening country	Universities at European Level	Support transformation of HE institutions towards excellence and international profile



# Thank you!

## #HorizonEU

<http://ec.europa.eu/horizon-europe>



© European Union 2021

Unless otherwise noted the reuse of this presentation is authorised under the [CC BY 4.0](https://creativecommons.org/licenses/by/4.0/) license. For any use or reproduction of elements that are not owned by the EU, permission may need to be sought directly from the respective right holders.

Image credits: © ivector #235536634, #249868181, #251163013, #266009682, #273480523, #362422833, #241215668, #244690530, #245719946, #251163053, #252508849, 2020. Source: Stock.Adobe.com. Icons © Flaticon – all rights reserved.